



# MOPAR TIPM INSTALLATION & RESET INSTRUCTIONS

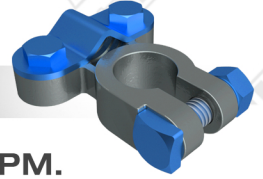
## Mopar TIPM Installation & Reset Instructions

For Chrysler, Dodge, Jeep, and RAM vehicles equipped with a TIPM (Totally Integrated Power Module)

Please follow the steps below carefully to ensure proper installation.

### STEP 1: Disconnect the Battery

- Disconnect the negative battery terminal before removing the original TIPM.
- This helps prevent electrical damage during the swap.



### STEP 2: Remove the Original TIPM

- Locate the TIPM (typically found under the hood, near the battery).
- Disconnect all wiring harnesses and remove the unit.
- Take note of how connectors are routed for reinstallation.

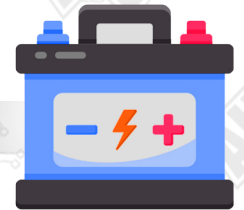


### STEP 3: Install the Replacement TIPM

- Mount the remanufactured TIPM in the original location.
- Reconnect all plugs and harnesses securely.
- Make sure no pins are bent or loose during connection.

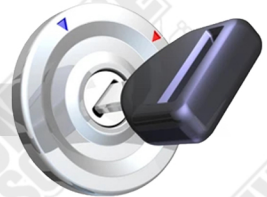
### STEP 4: Reconnect the Battery

- Reconnect the negative battery terminal.
- Allow the vehicle to sit for 10 minutes with the key out of the ignition before proceeding.



### STEP 5: Initial Key-On Reset

- Insert the key and turn it to the ON position (do not start).
- Wait 30 seconds before cranking the engine.
- Then, start the vehicle and allow it to idle.



### STEP 6: Function Test

- After startup, test all critical functions controlled by the TIPM:
  - Fuel system
  - Lighting
  - Wipers
  - Blower motor
  - Horn
  - Power accessories (locks/windows/etc.)



### IMPORTANT NOTES:

- Ensure your battery is fully charged before and after installation. Low voltage can cause communication issues or trigger fault codes.
- Never force or bypass any ignition/fuse circuits—doing so may damage internal relays.
- If any issues arise, please reach out to our team for technical support.